

Pink Runtz

Sample

Strain **Pink Runtz**

<b>0.19%</b>	<b>13.64%</b>	<b>16.08%</b>
$\Delta 9$ THC	Total CBD	Total Cannabinoids
<b>Not tested</b>	<b>Pass</b>	<b>160.8</b>
Water Activity	<b>6.26</b> Moisture	mg / g Total Cannabinoids



Sample ID

Matrix

Grams per

0.86

Harvest/Prod Date

Report Created

1/24/2023

Results Valid Until

1/24/2023

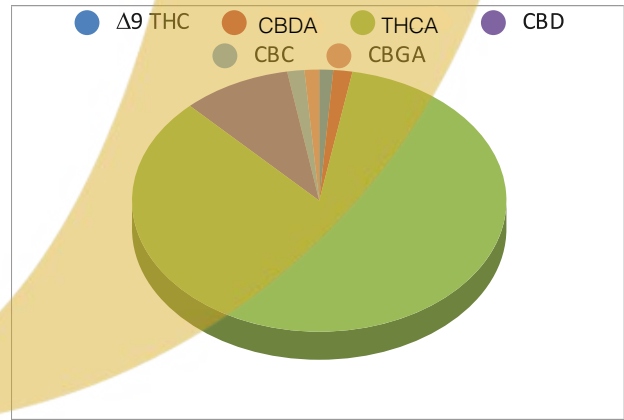
Sample Extracted

1/21/2023 18:15

Sample Analyzed


1/22/2023 18:25

Cannabinoids	%Weight	LOQ(% /w)	Mg/g
$\Delta 9$ THC	<b>0.19</b>	0.08	1.67
THCA	26.7	0.08	267.21
Total THC (THCA*0.877)+ $\Delta 9$ THC	0.43	0.08	3.66
CBDA	1.36	0.08	11.758
CBD	1.51	0.08	15.98
CBN	0.00	0.08	0.00
‡ $\Delta 8$ THC	0.00	0.08	0.00
‡ CBC	0.24	0.08	2.05
‡ CBGA	0.20	0.08	1.75
‡ CBG	0.00	0.08	0.00
Total cannabinoids per pre-roll			138.30



Total THC and Total CBD are calculated values per OAR 333-064-0100. Cannabinoid values for plant matter samples are reported on a dry weight basis. Water activity action level is 0.65Aw. LOQ= Limit of Quantitation. NR=Not Reported 0.00 = Not Detected above LOQ

[Rogue Research Lab LLC](#)  
[218 E. Main Street, Rogue River, OR 97537](#)  
[Tel. 541-582-1962](#)  
[ORELAP 4107 OLCC 101050708B](#)  
[rogueresearchlab.com](#)

  
 Craig Berry - Lab Director  
 1/24/23

Results pertain to submitted samples only. Rogue Research Lab LLC makes no claims as to the consumer safety or other risks associated with any detected or non-detected amounts of any pesticides, solvents or other adulterants. This report shall not be reproduced, unless in its entirety, without written approval from Rogue Research Lab LLC. Samples were received in good condition and all QC samples met acceptance criteria of the method; data available upon request. Analytes accompanied by dagger (‡) are not within the scope of accreditation and are for informational purposes only.